

# Long Eaton Riding Club

## 2020 Schedule

### 2020 Show Dates: -

**22nd March - OPEN/CLUB SHOW**

**5th April - OPEN/CLUB SHOW**

**26th April - OPEN/CLUB SHOW**

**\*\*CHAPS/VHS Qualifiers\*\***

**17th May - OPEN/CLUB SHOW**

**14th June - OPEN/CLUB SHOW**

**\*\*CHAPS/VHS Qualifiers\*\***

**5th July - OPEN/CLUB SHOW**

**19th July - OPEN/CLUB SHOW**

**6th September - OPEN/CLUB SHOW**



**All Events Held at: -**

**Long Eaton Show Ground, Fields of  
Lanes Garden Centre and Open  
Farm, Breaston Lane, Risley, Derby,  
DE72 3TT**

# 2020 Class and Membership Prices

Welcome to Long Eaton Riding club. We are a local friendly riding club providing a number of unaffiliated events for equestrians.

All our shows are open shows — open to both Members and Non-members

Becoming a member saves you money on entry fees and if you attend four or more shows qualifies you for the end of season points for prizes.

## Price List 2020

Classes non-members £10 per class

Members £5 per class

Fun Classes £3 per class

Membership £15 per combination £10 prior to 1st  
March 2020

Membership per additional horse £7

First aid per competitor per show £2

Long Eaton Riding Club would thank all their supporters and helpers over the years and we wish all our competitors a successful season for 2020

*Q. What does it mean if you find a horseshoe?*

*A. Some poor horse is walking around in his socks.*

# Jo Savilles Dog Paddock In Hand Showing

## RING 1 To Start 10.00 Prompt

**Class  
Number**

**Class Description**

- 1 **Youngstock**—horse/pony 3years and under on 1st January 2020. Colts aged 2 or 3 to be bitted
- 2 **Open Mountain and Moorland** — Open to all In Hand Mountain & Moorland ponies registered with their respective Pure Bred Societies of Dartmoor, Exmoor, Shetland, Welsh A, B, C and D Connemara, Dales, Fell, Highland, New Forest, Stallion, mare, colt, filly or gelding, any age.
- 3 **Open Cob**— Open to any cob horse/pony to be shown hogged or natural
- 4 **Open Hunter**— Open to any hunter type horse/pony
- 5 **Open Coloured**— Open to any coloured horse/pony hogged, plaited or Traditional.

- 6 **Open miniature** — Not exceeding 42" to be shown as a miniature clipped and trimmed

**SPONSORED BY HEALING PAWS ANIMAL RESCUE**



- 7 **Open Shetland**—Standard or miniature
- 8 **Open Veteran**—Open to any horse/pony 15years and over on 1st January 2020
- 9 **Open Show or Riding Horse/pony**—open to all plaited show types any height
- 10 **Open Pony/Horse**—open to all exhibits
- 11 **In Hand Concourse d'elegance** — Open to any horse/pony costume or traditional attire.

**Ring Championship**—Any Competitor place 1st and 2nd in classes 1—11 can take part. Prize for Champion and Reserve of ring plus member champion

# BOBBO Equestrian- Riding club showing

RING 6 10.00 start

Class Number	Class Description
12	<b>Young Handler 11 years and under</b> —horse/pony to be an appropriate size for the handler. Handler judged on ability, style and control. Aged 11 year or under on 1st January 2020
13	<b>Young Handler 12 to 16 years</b> —horse/pony to be an appropriate size for the handler. Handler judged on ability, style and control. Aged 12 to 16 years or under on 1st January 2020
14	<b>Rideability Lead Rein</b> —pony not exceeding 12.2hands and rider not to have attained 9th birthday on 1st January 2020. To be shown in snaffle and lead rein attached to the nose band.
15	<b>Rideability 16years and under</b> —Riders to be an appropriate size for their mount. Rider judged on ability and style of riding. Aged 16 year or under on 1st January 2020. Not including lead rein.
16	<b>Rideability 17years and over</b> —Riders to be an appropriate size for their mount. Rider judged on ability and style of riding. Aged 17 years or over on 1st January 2020.
17	<b>Riding club pony</b> — 14.2 and under, may include a small cross pole jump
18	<b>Riding club horse</b> — exceeding 14.2, may include a small cross pole jump

**Ring Championship**—Any Competitor place 1st and 2nd in classes 12—18 can take part. Prize for Champion and Reserve of ring plus member champion



*Call us today for a free quote*

☎ 0115 939 0390 📍 07771 503392

# U-Fit Windows Ridden Showing

RING 2 To Start 09.30 Prompt

Class Number	Class Description
19	<b>Tack and Turnout Ridden</b> —open to any competitor judged on appearance/turnout of the combination. No show piece required.
20	<b>Beginners showing (walk and Trot only)</b> - open to competitors new to showing. Combinations NOT to have been placed 1st in the class previous seasons. Entrants in this class can enter class 21 but may NOT enter classes 22 to 30
21	<b>Novice showing</b> - open to Novice riders/horses. Will be walk and trot in the go around and walk, trot, canter individual show piece. Entrants in this class can enter any other showing class providing they did not enter class 20
22	<b>Lead Rein</b> —pony not exceeding 12.2hands and rider not to have attained 9th birthday on 1st January 20120 To be shown in snaffle and lead rein attached to the nose band.
23	<b>First Ridden</b> —pony not exceeding 13.2hands and rider not to have attained 10th birthday on 1st January 2020. To be shown in snaffle. Canter optional. <b>Ring Championship</b> —Any Competitor place 1st and 2nd in classes 19—23 can take part. Prize for Champion and Reserve of ring plus member champion
24	<b>Open Mountain and Moorland</b> — Open to all In Hand Mountain & Moorland ponies registered with their respective Pure Bred Societies of Dartmoor, Exmoor, Shetland, Welsh A, B, C and D Connemara, Dales, Fell, Highland, New Forest, Stallion, mare, colt, filly or gelding, any age.
25	<b>Open Cob</b> — Open to any cob horse/pony to be shown hogged or natural
26	<b>Open Hunter</b> — Open to any hunter type horse/pony
27	<b>Open Coloured</b> — Open to any coloured horse/pony hogged, plaited or Traditional.

# Ridden Showing Continued

- 28 **Open Veteran**—Open to any horse/pony 15years and over on 1st January 2019
- 29 **Open Show or Riding Horse/pony**—open to all plaited show types any height
- 30 **Open Pony/Horse**—open to all exhibits
- 31 **Open Concourse D'elegance** — Open to any horse/pony costume or traditional attire.

**Ring Championship**—Any Competitor place 1st and 2nd in classes 24—31 can take part. Prize for Champion and Reserve of ring plus member champion



*Call us today for a free quote*

☎ 0115 939 0390 📞 07771 503392

LESLEY JEFFS  
07956 623025

TIGERTOTZ

A collage of eight photographs showing various horses and ponies in different settings. The top row includes a brown horse standing in a field, a rider on a brown horse in a show ring, a rider on a dark horse on a path, and a woman in a red dress standing between two white horses with a small white dog. The bottom row shows a brown horse and foal, a brown horse and black dog, two brown horses in a field, and a group of brown horses and ponies running in a field.

LESLEY@TIGERTOTZ.CO.UK / WWW.TIGERTOTZ.CO.UK

# Franford Events Working Hunter

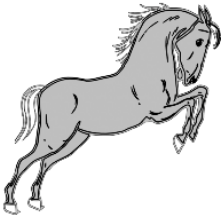
**RING 4 To Start 10.00 Prompt**

<b>Class Number</b>	<b>Class Description</b>
<b>32</b>	<b>Lead Rein</b> —20cm/raised poles. Pony not exceeding 12.2hands and rider not to have attained 9th birthday on 1st January 2020. To be shown in snaffle and lead rein attached to the nose band.
<b>33</b>	<b>First Ridden</b> — 20cm/30cm. pony not exceeding 13.2hands and rider not to have attained 10th birthday on 1st January 2020. To be shown in snaffle.
<b>34</b>	<b>Beginners horse/Pony</b> — open to competitors new to working hunter. Combinations must be genuine beginners
<b>35</b>	<b>Novice horse/pony 50cm/60cm</b>
<b>36</b>	<b>Open Mountain and moorland</b> —jumps max. 60cm *highest placed small breed and large to be put forward for stars championships
<b>37</b>	<b>Pre-Intermediate horse/pony 70cm</b> *highest placed under 133cm horse to be put forward for stars championships
<b>38</b>	<b>Intermediate horse/pony 80cm</b> *highest placed 133cm-153cm horse to be put forward for stars championships
<b>39</b>	<b>Open horse/pony 90cm</b> *highest placed 153cm horse to be put forward for stars championships

Competitors may enter 2 consecutive classes

**Ring Championship**—Any Competitor place 1st and 2nd in classes 32—39 can take part. Prize for Champion and Reserve of ring plus members Champion



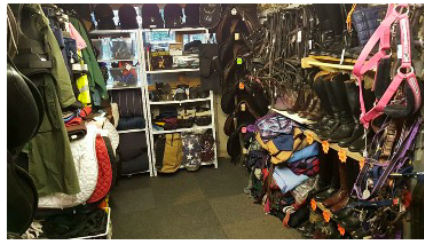
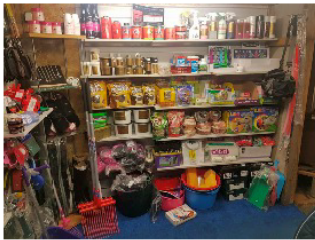


# Bobbo Equestrian

**New and Pre-Owned Equestrian products**

**Opened at the end of 2016 show season, Bobbo Equestrian took the show shop to a fully opened premises, just 1/2 a mile away from LERC show ground.**

**Stocking a vast array of quality pre owned saddles, bridles, rugs, jackets, jods plus much much more, we have something for everyone as well as our popular stock of new everyday consumables and showing items.**



**We stock many well known brands such as Carr & Day & Martin, Hy, Lemeuix, Mark Todd to name a few. We have a stock of grooming equipment, treats and yard tools as well as new Boots, Jodphurs and Just Toggs clothing.**

**We open daily from 9am-5pm  
Sundays 10am-4pm**

**BOBBO EQUESTRIAN / MILL HILL GARDEN CENTRE/ MILL HILL LANE  
BREASTON / DERBYSHIRE / DE723AX / 07838769173**

**[www.bobboequestrian.co.uk](http://www.bobboequestrian.co.uk) - [www.facebook.com/usedequestrian](https://www.facebook.com/usedequestrian)**



# Show Jumping

**RING 3 Start 09.30 Prompt**

<b>Class Number</b>	<b>Class Description</b>
<b>39</b>	<b>Lead Rein</b> —20cm/raised poles. Pony not exceeding 12.2hands and rider not to have attained 9th birthday on 1st January 2020. To be shown in snaffle and lead rein attached to the nose band Can only enter classes 39 & 40
<b>40</b>	<b>First Ridden</b> — 20cm/30cm. pony not exceeding 13.2hands and rider not to have attained 10th birthday on 1st January 2020
<b>41</b>	<b>Junior Beginners 40cm/50cm</b> — open to competitors new to show jumping. Combinations must be genuine beginners
<b>42</b>	<b>Senior Beginners 40/50cm</b> — open to competitors new to show jumping. Combinations must be genuine beginners
<b>43</b>	<b>Junior Novice 50/60cm</b>
<b>44</b>	<b>Senior Novice 50/60cm</b>
<b>45</b>	<b>Pairs Jumping 60cm</b> — faster round with least faults wins
<b>46</b>	<b>Junior Novice 65cm</b> <i>*lead points winner will be asked to represent LERC at STARS Champion of Champions</i>
<b>47</b>	<b>Senior Novice 65cm</b>
<b>48</b>	<b>Junior Pre-Intermediate 75cm</b> <i>**lead points winner will be asked to represent LERC at STARS Champion of Champions</i>
<b>49</b>	<b>Senior Pre-Intermediate 75cm</b> <i>*lead points winner will be asked to represent LERC at STARS Champion of Champions</i>
<b>50</b>	<b>Junior Intermediate 85cm</b>
<b>51</b>	<b>Senior Intermediate 85cm</b> <i>*lead points winner will be asked to represent LERC at STARS Champion of Champions</i>
<b>52</b>	<b>Junior Open 95cm</b> <i>*lead points winner will be asked to represent LERC at STARS Champion of Champions</i>
<b>53</b>	<b>Senior Open 95cm</b> <i>*lead points winner will be asked to represent LERC at STARS Champion of Champions</i>

Competitors may enter 3 consecutive classes - excluding pairs

Seniors(17yrs and over on 1st Jan 2020) and Juniors will compete together but placed separately. Classes 46 to 53 Qualifiers for Trailblazers, Cricklands Championships of Great Britain, MIDARC, Riders UK / EUSK 2020

# Fun Classes

**RING 5 To Start Approx. 13:00 after Dressage**

Class Number	Class Description
54	Most Appealing Pony /horse
55	Most Handsome Gelding
56	Prettiest Mare
57	Best conditioned



*Call us today for a free quote*

☎ 0115 939 0390 📞 07771 503392

# Dressage

**RING 5 Open from 10.00 till 12.00**

	22/3/20	5/4/20	26/4/20	17/5/20	14/6/20	5/7/20	19/7/20
58—INTRO	A	B	C	A	B	C	A
59—PRELIM	2	1	18	13	7	12	2
60—NOVICE	30	24	27	34	30	28	24
	6/9/20						
58—INTRO	B						
59—PRELIM	1						
60—NOVICE	30						

# Handy Pony

**RING 6    Open From 11:00 until 13:00**

<b>Class Number</b>	<b>Class Description</b>
<b>61</b>	<b>Lead Rein</b> —Pony not exceeding 12.2hands and rider not to have attained 9th birthday on 1st January 2020. To be shown in snaffle and lead rein attached to the nose band
<b>62</b>	<b>11 years and under</b> —rider not to have attained 11th birthday on 1st January 2020
<b>63</b>	<b>12—15 years</b> —riders aged 12 to 15 years on 1st January 2020
<b>64</b>	<b>16 years and over</b> —rider to be 16 or over on 1st January 2020

# Games

**RING 6    After riding club classes approx. 13.00**

<b>Class Number</b>	<b>Class Description</b>
<b>65</b>	<b>Lead Rein</b> —Pony not exceeding 12.2hands and rider not to have attained 9th birthday on 1st January 2020. To be shown in snaffle and lead rein attached to the nose band
<b>66</b>	<b>13 years and under</b> —rider not to have attained 14th birthday on 1st January 2020
<b>68</b>	<b>14 years and over</b> —rider to be 14 years or over on 1st January 2020

**Keep up to date with all the latest Long Eaton Riding club news and extra events added on our facebook page @ Long Eaton Riding Club (official page)**

# Supreme Champion of Show

Supreme and Reserve Champion from each of the 4 showing/working hunter rings to compete in the Supreme Champion of show. To be held after the last ring champion has been completed. Sponsored by: -



**SHOWSTOPPERS**  
Rosettes & Trophies

View our brochures



01623 754985

[webinfo@showstoppersltd.co.uk](mailto:webinfo@showstoppersltd.co.uk)

Members Champion from each of the 3 showing/working hunter rings to compete in the Supreme Members Champion and reserve champion of show. To be held after the last ring champion has been completed. Sponsored by: -

## TROT ON TRAILERS

**Lorraine Moon 07850 005225**

FOLLOWING MOON 07820 002552

LIVE ON LINE

# Long Eaton Riding Club Rules

1. All persons attending LERC shows do so at their own risk. The organisers/landowner cannot accept responsibility for any loss or injury to any person, animal or property how so ever caused.
2. The Judges decisions are final.
3. Any objections must be handed to the Club Secretary in writing within 15 minutes of the event, with a deposit of £25 which will be forfeited if the objection is overruled by the appropriate procedure.
4. All riders under 18s years of age must have fastened current British Standard Riding Hat and appropriate footwear. No trainers whilst mounted, all exhibitors must be suitably dressed, including showing animal's in-hand. If you are aged 18 and over and would like to wear a Beagles/Bowler/Top Hat, you do so at your own risk. **WE STRONGLY ADVISE AND PREFER** that all persons wear a correctly strapped British Standard Hat, you will NOT be penalised for this in any classes. In all, including in-hand-classes people under the age of 18 must wear a British Standard Riding Hat. In all qualifier classes hats must be worn in accordance to the specific qualifiers rules.
5. You may wear a body protector IN ANY CLASS without being penalised.
6. Where the height or age of a horse or pony is disputed, the competitor will be asked to produce the relevant certificate.
7. Spurs may not be worn in M & M Ridden, Veteran or Handy Pony. Anyone misusing spurs in the Judges opinion will be disqualified.
8. The organisers reserve the right to limit or cancel classes or refuse entry to classes if time and or conditions dictate. If there are less than 4 entries in a class, organisers reserve the right to amalgamate or cancel that class.
9. Anyone who conducts themselves inappropriately to Judges, Officials, Spectators or their animal will be requested to leave the show ground or venue immediately. We reserve the right to request any persons to leave if their behaviour is not appropriate. Inappropriate behaviour will result in a ban from competing at ALL LERC show events in the future. The judge's decision is final.
10. Any horse or pony may have more than one rider provided that the combinations do not compete in the same class with the exception of Handy Pony and Dressage classes. The name of the horse or pony must stay the same for all its riders.

# Long Eaton Riding Club Rules

11. Lead Rein Classes: Children are to be 9 years and under as at the 1<sup>st</sup> January in the current year. Must be in a snaffle bit and lead rein attached to the nose band. The lead rein handler must be able to handle the pony suitably. The pony must not exceed 12.2 on the lead rein.

12. IN THE INTERESTS OF SAFETY RIDERS ARE ASKED NOT TO TROT, CANTER, GALLOP OR LUNGE ANY WHERE ON THE SHOW GROUNDS TWO FIELDS/PARKING AREAS. ANY OFFENDERS WILL BE ASKED TO LEAVE THE SHOW GROUND.

13. Strictly NO LUNGING on the show ground.

14. On entering and leaving the show ground the main gate MUST be closed behind you.

15. A competitor called by the judge will normally be given two minutes to present themselves, otherwise the class will proceed without them, unless the judge is otherwise informed. It's the competitor's responsibility to arrive at the class on time.

**The organisers cannot be held responsible for classes which clash.**

15. Lameness of unfit horses or ponies will be asked to retire from events.

16. No horse or pony under 4 years of age is to compete in any ridden class.

17. Handlers of colts or stallions **MUST** be over 16 years old.

18. All dogs must be kept on leads and cleaned up after, anyone found to let a dog foul and not clear it up will be banned from LERC, dog faeces are a hazard and highly unpleasant.

19. Any questions or queries are to be put in writing and addressed to the Club Secretary, which can then be discussed / resolved at the next club meeting.

**THE COMMITTEE OF LONG EATON RIDING CLUB WISH YOU A HAPPY, SAFE AND SUCCESSFUL DAY.**

# Qualifiers 2020

- Trailblazers 2020 all shows 22nd March to 17th May in the relevant Show-jumping, Working Hunter and showing classes. 2nd round cards on sale £12 each
- Trailblazers 2021 all shows 14th June to 6th September in the relevant Show-jumping, Working Hunter and showing classes.
- Riders UK 2020
- VHS—26th April and 14th June
- CHAPS—26th April and 14th June
- MIDARC
- Cricklands
- ESUK 2020
- TSR—Dates TBA
- Equifest—Dates TBA



[amco.eu.com](http://amco.eu.com)

Providing global logistic solutions and proud to sponsor  
the local community