

Long Eaton Riding Club

2021 Schedule

2021 Show Dates: -

16th May - OPEN/CLUB SHOW

13th June - OPEN/CLUB SHOW

4th July—OPEN/CLUB SHOW

18th July—OPEN/CLUB SHOW

15th August—OPEN/CLUB SHOW

12th September - OPEN/CLUB SHOW

Restricted schedule for 2021 due to social distancing measures.



All Events Held at: -

**Long Eaton Show Ground, Fields of
Lanes Garden Centre and Open
Farm, Breaston Lane, Risley, Derby,
DE72 3TT**

2021 Class and Membership Prices

Welcome to Long Eaton Riding club. We are a local friendly riding club providing a number of unaffiliated events for equestrians.

All our shows are open shows — open to both Members and Non-members

Becoming a member saves you money on entry fees and if you attend 4 shows of 2021 qualifies you for the end of season points for prizes.

Price List 2021

Classes non-members £10 per class

Members £6 per class

Fun Classes £4 per class

Membership £15 per combination £10 prior to 1st
1st April 2021

Membership per additional horse £7

Due to the current situation with regards to COVID-19 all shows are pre-entry only. Entries will close on the Monday prior to each show.

To help with social distancing we will be issuing a time plan for classes and cannot run the handy pony and games classes this season.

Extra warm up arenas have been made in order to maintain social distancing. Please follow the advice given by LERC to keep us all safe on the show-ground

Q. What is best type of story to tell a runaway horse?

A. A tale of WHOA!

Jo Savilles Dog Paddock In Hand Showing

RING 5 To Start 11.00 after Dressage

**Class
Number**

Class Description

- 1 **In Hand Concourse d'elegance** — Open to any horse/pony costume or traditional attire.
- 2 **Youngstock**—horse/pony 3years and under on 1st January of the current year. Colts aged 2 or 3 to be bitted
- 3 **Open Veteran**—Open to any horse/pony 15years and over on 1st January of the current year.
- 4 **Open Cob**— Open to any cob horse/pony to be shown hogged or natural
- 5 **Open Hunter**— Open to any hunter type horse/pony
- 6 **Open Coloured**— Open to any coloured horse/pony h Traditional.
- 7 **Open miniature** — Not exceeding 42" to be shown as a miniature clipped and trimmed



SPONSORED BY HEALING PAWS ANIMAL RESCUE

- 8 **Open Mountain and Moorland** — Open to all In Hand Mountain & Moorland ponies registered with their respective Pure Bred Societies of Dartmoor, Exmoor, Shetland, Welsh A, B, C and D Connemara, Dales, Fell, Highland, New Forest, Stallion, mare, colt, filly or gelding, any age.
- 9 **Open Pony/Horse**—open to all exhibits
- 10 **Young Handler**—open to all handlers under 16 (on the 1st January) and their horse/pony
Ring Championship—Any Competitor place 1st and 2nd in classes 1—10 can take part. Prize for Champion and Reserve of ring plus member champion

U-Fit Windows Ridden Showing

RING 2 To Start 09.30 Prompt

Class Number	Class Description
11	Beginners showing (walk and Trot only) - open to competitors new to showing. Combinations NOT to have been placed 1st in the class previous seasons. Entrants in this class can enter class 12 but may NOT enter classes 13 to 20
12	Novice showing - open to Novice riders/horses. Will be walk and trot in the go around and walk, trot, canter individual show piece. Entrants in this class can enter any other showing class providing they did not enter class 11
13	Lead Rein —pony not exceeding 12.2hands and rider not to have attained 9th birthday on 1st January of the current year. To be shown in snaffle and lead rein attached to the nose band.
14	First Ridden —pony not exceeding 13.2hands and rider not to have attained 10th birthday on 1st January of the current year. . To be shown in snaffle. Canter optional. Ring Championship —Any Competitor place 1st and 2nd in classes 11—14 can take part. Prize for Champion and Reserve of ring plus member champion
15	Open Veteran —Open to any horse/pony 15years and over on 1st January of the current year. —VHS Qualifier
16	Open Cob — Open to any cob horse/pony to be shown hogged or natural
17	Open Hunter — Open to any hunter type horse/pony
18	Open Coloured — Open to any coloured horse/pony hogged, plaited or Traditional.

Ridden Showing Continued

- 19 Open Mountain and Moorland** — Open to all In Hand Mountain & Moorland ponies registered with their respective Pure Bred Societies of Dartmoor, Exmoor, Shetland, Welsh A, B, C and D Connemara, Dales, Fell, Highland, New Forest, Stallion, mare, colt, filly or gelding, any age.
- 20 Open Pony/Horse**—open to all exhibits
- 21 Ridability**— open to all ridden combinations, including lead rein
- 22 Riding club pony/horse**— includes a small jump, open to all ridden com-
- 23 Open Concourse D'elegance** — Open to any horse/pony costume or traditional attire.
- Ring Championship**—Any Competitor place 1st and 2nd in classes 15—23 can take part. Prize for Champion and Reserve of ring plus member champion



Call us today for a free quote

☎ 0115 939 0390 📞 07771 503392

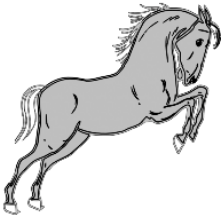
Bobbo Equestrian Working Hunter

RING 4 To Start 10.00 Prompt

Class Number	Class Description
24	Lead Rein —20cm/raised poles. Pony not exceeding 12.2hands and rider not to have attained 9th birthday on 1st January of the current year. To be shown in snaffle and lead rein attached to the nose band.
25	First Ridden — 20cm/30cm. pony not exceeding 13.2hands and rider not to have attained 10th birthday on 1st January of the current year. To be shown in snaffle.
26	Beginners horse/Pony — open to competitors new to working hunter. Combinations must be genuine beginners
27	Novice horse/pony 50cm/60cm
28	Open Mountain and moorland —jumps max. 60cm *highest placed small breed and large to be put forward for stars championships
29	Pre-Intermediate horse/pony 70cm *highest placed under 133cm horse to be put forward for stars championships
30	Intermediate horse/pony 80cm *highest placed 133cm-153cm horse to be put forward for stars championships
31	Open horse/pony 90cm *highest placed 153cm horse to be put forward for stars

Competitors may enter 2 consecutive classes

Ring Championship—Any Competitor place 1st and 2nd in classes 24—31 can take part. Prize for Champion and Reserve of ring plus members Champion

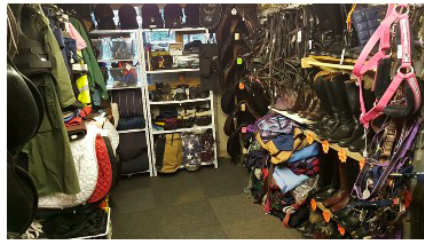
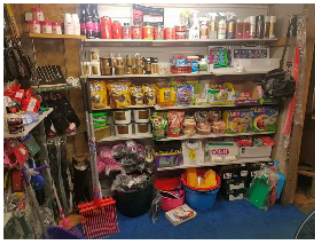


Bobbo Equestrian

New and Pre-Owned Equestrian products

Opened at the end of 2016 show season, Bobbo Equestrian took the show shop to a fully opened premises, just 1/2 a mile away from LERC show ground.

Stocking a vast array of quality pre owned saddles, bridles, rugs, jackets, jods plus much much more, we have something for everyone as well as our popular stock of new everyday consumables and showing items.



We stock many well known brands such as Carr & Day & Martin, Hy, Lemeuix, Mark Todd to name a few. We have a stock of grooming equipment, treats and yard tools as well as new Boots, Jodphurs and Just Toggs clothing.

We open daily from 9am-5pm
Sundays 10am-4pm

BOBBO EQUESTRIAN / MILL HILL GARDEN CENTRE/ MILL HILL LANE
BREASTON / DERBYSHIRE / DE723AX / 07838769173

www.bobboequestrian.co.uk - www.facebook.com/usedequestrian

Bobbo Equestrian Show Jumping

RING 3 Start 09.30 Prompt

Class Number	Class Description
32	Lead Rein —20cm/raised poles. Pony not exceeding 12.2hands and rider not to have attained 9th birthday on 1st January of the current year. To be shown in snaffle and
33	First Ridden — 20cm/30cm. pony not exceeding 13.2hands and rider not to have attained 10th birthday on 1st January of the current year.
34	Junior Beginners 40cm/50cm — open to competitors new to show jumping. Combinations must be genuine beginners
35	Senior Beginners 40/50cm — open to competitors new to show jumping. Combinations must be genuine beginners
36	Junior Novice 50/60cm
37	Senior Novice 50/60cm
38	Junior Novice 65cm <i>*lead points winner will be asked to represent LERC at STARS Champion of Champions</i>
39	Senior Novice 65cm
40	Junior Pre-Intermediate 75cm <i>**lead points winner will be asked to represent LERC at STARS Champion of Champions</i>
41	Senior Pre-Intermediate 75cm <i>*lead points winner will be asked to represent LERC at STARS Champion of Champions</i>
42	Junior Intermediate 85cm
43	Senior Intermediate 85cm <i>*lead points winner will be asked to represent LERC at STARS Champion of Champions</i>
44	Open 95cm

Competitors may enter 3 consecutive classes

Seniors(17yrs and over on 1st Jan of the current year.) and Juniors will compete together but placed separately. Classes 46 to 53 Qualifiers for Cricklands Championships of Great Britain

Fun Classes

RING tba To Start Approx. 13:00

Class Number	Class Description
45	Most Appealing Pony /horse
46	Most Handsome Gelding
47	Prettiest Mare



Call us today for a free quote

 **0115 939 0390**  **07771 503392**

Dressage

RING 5 Open from 09.00 to 11.00 subject to entries

INTRO	16/5/21 A	13/6/21 B	4/7/21 C	18/7/21 A	15/8/21 B	12/9/21 C
PRELIM	1	2	7	12	13	14
NOVICE	24	27	28	30	34	24

Supreme Champion of Show

Supreme and Reserve Champion from each of the 3 showing/working hunter rings to compete in the Supreme Champion of show. To be held after the last ring champion has been completed. Sponsored by: -



SHOWSTOPPERS
Rosettes & Trophies

View our brochures



01623 754985

webinfo@showstoppersltd.co.uk

Members Champion from each of the 3 showing/working hunter rings to compete in the Supreme Members Champion and reserve champion of show. To be held after the last ring champion has been completed. Sponsored by: -

TROT ON TRAILERS

Lorraine Moon 07850 005225

FOLLOWING MOON 07820 002552

TROT ON TRAILERS

Long Eaton Riding Club Rules

1. All persons attending LERC shows do so at their own risk. The organisers/landowner cannot accept responsibility for any loss or injury to any person, animal or property how so ever caused.
2. The Judges decisions are final.
3. Any objections must be handed to the Club Secretary in writing within 15 minutes of the event, with a deposit of £25 which will be forfeited if the objection is overruled by the appropriate procedure.
4. All riders under 18s years of age must have fastened current British Standard Riding Hat and appropriate footwear. No trainers whilst mounted, all exhibitors must be suitably dressed, including showing animal's in-hand. If you are aged 18 and over and would like to wear a Beagles/Bowler/Top Hat, you do so at your own risk. **WE STRONGLY ADVISE AND PREFER** that all persons wear a correctly strapped British Standard Hat, you will NOT be penalised for this in any classes. In all, including in-hand-classes people under the age of 18 must wear a British Standard Riding Hat. In all qualifier classes hats must be worn in accordance to the specific qualifiers rules.
5. You may wear a body protector IN ANY CLASS without being penalised.
6. Where the height or age of a horse or pony is disputed, the competitor will be asked to produce the relevant certificate.
7. Spurs may not be worn in M & M Ridden, Veteran. Anyone misusing spurs in the Judges opinion will be disqualified.
8. The organisers reserve the right to limit or cancel classes or refuse entry to classes if time and or conditions dictate. If there are less than 4 entries in a class, organisers reserve the right to amalgamate or cancel that class.
9. Anyone who conducts themselves inappropriately to Judges, Officials, Spectators or their animal will be requested to leave the show ground or venue immediately. We reserve the right to request any persons to leave if their behaviour is not appropriate. Inappropriate behaviour will result in a ban from competing at ALL LERC show events in the future. The judge's decision is final.
10. Any horse or pony may have more than one rider provided that the combinations do not compete in the same class with the exception of Dressage classes. The name of the horse or pony must stay the same for all its riders.

Long Eaton Riding Club Rules

11. Lead Rein Classes: Children are to be 9 years and under as at the 1st January in the current year. Must be in a snaffle bit and lead rein attached to the nose band. The lead rein handler must be able to handle the pony suitably. The pony must not exceed 12.2 on the lead rein.

12. IN THE INTERESTS OF SAFETY RIDERS ARE ASKED NOT TO TROT, CANTER, GALLOP OR LUNGE ANY WHERE ON THE SHOW GROUNDS TWO FIELDS/PARKING AREAS. ANY OFFENDERS WILL BE ASKED TO LEAVE THE SHOW GROUND.

13. Strictly NO LUNGING on the show ground.

14. On entering and leaving the show ground the main gate MUST be closed behind you.

15. A competitor called by the judge will normally be given two minutes to present themselves, otherwise the class will proceed without them, unless the judge is otherwise informed. It's the competitor's responsibility to arrive at the class on time.

The organisers cannot be held responsible for classes which clash.

15. Lameness of unfit horses or ponies will be asked to retire from events.

16. No horse or pony under 4 years of age is to compete in any ridden class.

17. Handlers of colts or stallions **MUST** be over 16 years old.

18. All dogs must be kept on leads and cleaned up after, anyone found to let a dog foul and not clear it up will be banned from LERC, dog faeces are a hazard and highly unpleasant.

19. Any questions or queries are to be put in writing and addressed to the Club Secretary, which can then be discussed / resolved at the next club meeting.

20. Social distancing **MUST** be adhered to as advised at the time of show by the government.

21. All classes are pre-entry only. We have the right to refuse entries and amalgamate classes based on entries

22. If you show any symptoms 10 days prior to the show or have been in contact with anyone with COVID-19 in 14 days prior to the show please **DO NOT ATTEND** we will refund your entry

THE COMMITTEE OF LONG EATON RIDING CLUB WISH YOU A HAPPY, SAFE AND SUCCESSFUL DAY.